

# **TENNESSEE BIBLE COLLEGE**



**GRADUATE CATALOG**  
**820**



# **TENNESSEE BIBLE COLLEGE**

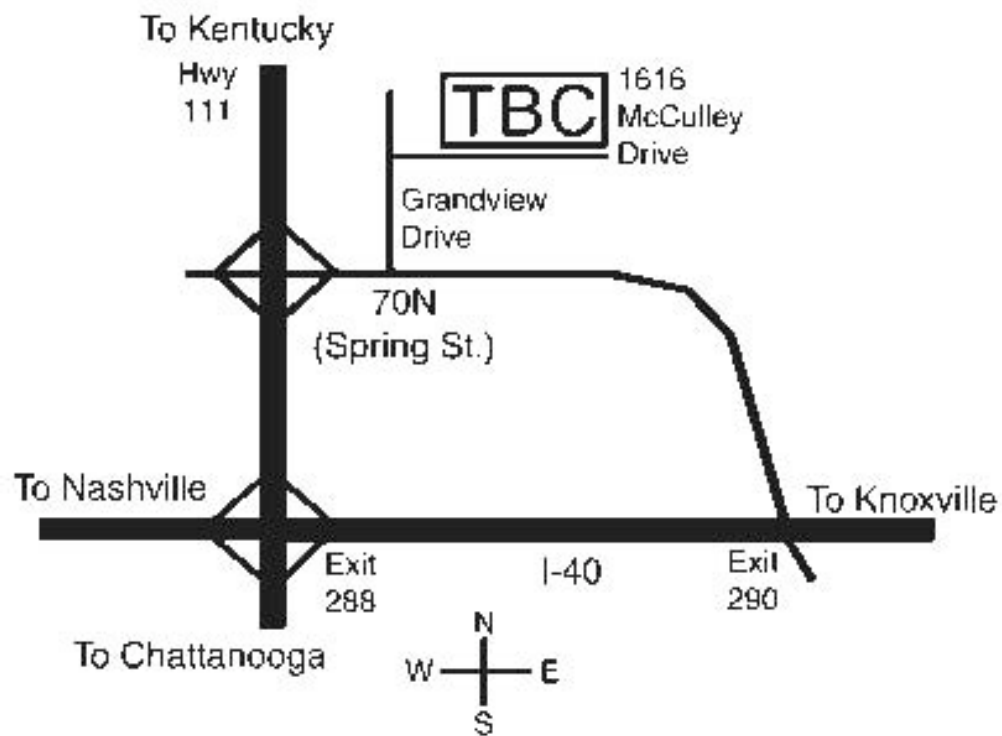


## **GRADUATE CATALOG**

### **Courses and General Information**

1616 McCulley Road  
Cookeville, Tennessee 38506  
Phone: (931)526-2616  
[www.tn-biblecollege.edu](http://www.tn-biblecollege.edu)

## LOCATION OF TENNESSEE BIBLE COLLEGE







## TABLE OF CONTENTS

<b>WHY A GRADUATE SCHOOL?</b>	8
<b>ADMINISTRATION, FACULTY, AND STAFF</b>	12
<b>GENERAL INFORMATION</b>	
Authorization	13
College Calendar	13
Board of Trustees	14
Campus Facilities & Equipment	14
<b>STUDENT LIFE</b>	
General Regulations	14
Student Complaint Procedure	15
Chapel	15
T.B.C. Associates	16
Housing and Jobs	16
Field Education	16

## **LECTURESHIPS AND SEMINARS**

Spiritual Renewal Week .....	17
Contemporary Issues Conference .....	17
Public Debates .....	17

## **LIBRARY FACILITIES .....18**

## **FINANCES**

Student Charges and Expenses .....	19
Payment of Accounts .....	19
Scholarships .....	19
Loans .....	19
Refunds .....	19
Cost of Programs .....	20

## **ACADEMIC REGULATIONS**

Academic Year .....	20
Grading System .....	20
Unit of Credit .....	21
Student Load .....	21
Academic Honors .....	21
Class Attendance .....	21
Contact Hours for Online Students .....	21
Excused Absences .....	22
Transcripts .....	22
Placement .....	22
Probation and Suspension .....	22
Class Changes .....	23

## **DEGREES OFFERED .....23**

## **DEGREE REQUIREMENTS**

Master of Theology .....	23
Doctor of Theology .....	26
Guidelines for Theses and Dissertations .....	27

Core Curriculum for Master of Theology .....	29
Core Curriculum for Doctor of Theology.....	29
<b>COURSE DESCRIPTIONS</b> .....	30
<b>PRE-ENROLLMENT AGREEMENT</b> .....	35
<b>ENROLLMENT AGREEMENT</b> .....	37

## Why a Graduate School?

### ***Philosophy***

The ancient Greek philosopher Plato believed that rulers should be philosophers. His book on political theory *The Republic* remains one of the most widely read texts on college campuses to this day. While his vision of philosopher-kings has seldom been realized, the idea of philosophers ruling the world of thought, especially in academic circles, is in many ways a startling fact of life. From Socrates to William James, these minds have shaped the way people view science, education, politics, economics, psychology, sociology, and even morals and religion.



Many of the elaborate theories of Western philosophy are anti-Christian. They often deny the attainability of truth even while they claim to possess it. Their speculations about metaphysics attack the concepts of the God of the Bible and divine revelation. Some, dismissing the miracles of Scripture as mythology, hold a naturalistic view of the universe, while others define God as some vague abstract principle. Though such antagonistic doctrines and their origins are not widely known to the general public, their influence is present in many areas of life. This is why it is so important to recognize, expose, and refute these false philosophies.

Paul warned, "Beware lest anyone cheat you through philosophy and empty deceit" (Col. 2:8). He had encountered materialistic Epicurean and Stoic philosophers at Athens in Acts 17. In preaching to this skeptical audience he pointed to nature as proof of God (vv. 24-27). He also used their own respected authors against them, quoting from Cleanthes and Aratus (v. 28). Paul had been educated in the finest rabbinical schools in Jerusalem and had likely learned about these writers long before he arrived in Athens as a Christian. When the time came for him to debate Greek philosophers on their own soil, he was prepared. His inspired assessment of Greek philosophy is summarized in his words to the church at Corinth which had been swayed by its influence: "The wisdom of this world is foolishness with God" (1 Cor. 3:19). A number of courses on the graduate level are designed to enable students to identify and respond to false philosophy. These classes trace the origin, causes, and development of various major strands of thought while

challenging students to logically critique and biblically disprove them. But all this is not just an academic exercise. These studies are geared toward practical ends. The knowledge acquired can be used in writing on a college level, preaching in a congregation, or confronting misleading ideologies in cultures throughout the world.

## ***Theology***

Catholic author Thomas Aquinas held that philosophy should serve as the handmaid of theology. This scholastic teacher believed true human reasoning of men such as Aristotle can serve a purpose in defending religious tenets. But since the Modern period philosophy has become more of a tyrant to theology. A strong anti-supernatural bias born of European agnosticism holds sway over many seminaries and university religion departments. As a result, many theologians, religious educators, ministers, priests, and rabbis reject the inspiration of the Bible and the prophetic element in Scripture. They deride the miracle stories and some even deny the deity and resurrection of Christ. For them the Bible must be judged by human (academic) wisdom and viewed through post-modern lenses. The creation account of Genesis must be replaced with theistic evolution and the authorship of Isaiah must be attributed to editors who lived long after the Judean prophet. The chaos in religion today is the result of generations of compromise with worldly thinking.

There is a great need to defend the Bible against the onslaught of this liberalism. Few colleges, especially at the graduate level, offer solid, Bible-based courses in apologetics, and even fewer offer degrees in Christian evidences. The pillars of Christianity—the existence of God, the deity of Christ, and the inspiration of the Bible—must be defended in this age of humanistic thinking.

But religious teaching that opposes the Bible does not always need support from false philosophy. Tradition often supplants the Scriptures. The doctrine of oral tradition in Jewish theology was the source of many false beliefs of rabbis in Jesus' day. He said, "You reject the commandment of God, that you may keep your tradition" (Mark 7:9). Catholic leaders adopted this concept, calling it sacred tradition and applying it to their own unbiblical beliefs and practices. Though they usually fall short of claiming a divine right



to tradition, Protestants also have “sacred cows” which they guard more loyally than the Bible itself.

It is the duty of Christians, especially teachers and preachers of the gospel, to expose and refute the fallacies of the doctrines and commandments of men. The little book of Jude tells us to “contend earnestly for the faith which was once for all delivered to the saints” (Jude 3). Peter said we should “always be ready to give a defense (*apologia*) to every man who asks you a reason for the hope that is in you” (I Pet. 3:15). Understanding how religious views originated and why they are wrong gives Christians a needed advantage in teaching the Bible in a world of religious diversity. That is why courses on the graduate level in these areas are important.

Then there are beliefs that stand outside what is generally conceived as the Judeo-Christian tradition. These range from groups like Jehovah’s Witnesses and Mormons to Muslims, Hindus, and Buddhists. In a much smaller world due to technology and travel, Christians are increasingly engaged in evangelistic opportunities with these belief systems. Knowledge of the various views of deity and divine revelation among world religions is needed in a pluralistic age. A well-rounded graduate program of Christian doctrine will help to fill this need.

### ***A Practical Apologetic***

Views of graduate religious studies, especially at the doctoral level, can err toward two extremes. One is thinking that these degrees will automatically make one a renowned scholar who can dazzle the academic world with profound articles, books, and lectures. But there is no place for pride and glory seeking in the Lord’s kingdom. We are as opposed to an intellectually elitist atmosphere in the classroom as we are to false doctrine. A school of “higher” learning in the true sense should be a lowly, humble setting. Malcolm Hill, TBC’s founder, used to tell students, “Keep your feet on the ground.” At the graduate level we emphasize Paul’s warning: “Knowledge puffs up” (I Cor. 8:1). While it is good for graduate students to have goals and plans for using their education, it is just as necessary to have a Christian attitude.

Other ministers and other Christians tend to have reservations about graduate studies. Some distrust it because they feel it is a threat to biblical soundness. Many schools of higher education lead students away from faith

in God and the Bible, and this pattern has fostered a suspicion of master's and doctoral degrees. We understand this concern. In fact, we strongly oppose this kind of indoctrination. That is why TBC began.

But there is another reason graduate schools can have a bad reputation. They can be absorbed with intense, complex theological questions that isolate students from the real world of people and their needs. Such sayings as "It takes three years to go through seminary and five years to get over it" and "It takes ten years to thaw out after a graduate education" reflect the frustration of trying to balance theory and practice. This is why we stress common sense, good practical judgment, people skills, and an overall perspective that can only come from the Word of God. The ultimate goal of these programs is Christian service, not academic acclaim. We are committed to advanced education that helps rather than hinders us from glorifying God and loving our fellow man.



## ADMINISTRATION

**David S. Hill** — B.S., Tennessee Technological University, M.A., Tennessee Bible College, President of Tennessee Bible College

**C. Kerry Duke** — B.A., M.A., Ph.D., Tennessee Bible College, Vice-President of Academics and Academic Affairs

**Glenn B. Ramsey** — Freed-Hardeman College; B.S., M.A., Tennessee Technological University, Professor of Religious Education

## FACULTY

**David S. Hill** — B.S., Tennessee Technological University, M.A., Tennessee Bible College

**Charles Kerry Duke** — B.A., M.A., Ph.D., Tennessee Bible College

**Glenn B. Ramsey** — Freed-Hardeman College; B.S., M.A., Tennessee Technological University; additional graduate study at Tennessee Bible College

**Jason Gann** — B.S., Tennessee Technological University, B.A. Tennessee Bible College, M.A., Tennessee Technological University, Ed. S., Tennessee Technological University

**Tim McHenry** — B.S., Tennessee Technological University, B.A. Tennessee Bible College

**Weylan Deaver** — B.A., Freed-Hardeman University, M.A., Bear Valley Bible Institute

**Mark Mitchell** — B.A., East Carolina University, M.A., East Carolina University; M.Th., Tennessee Bible College

**Donny Weimar**—Certificate, Brown Trail School of Preaching, B.S., Texas A & M Univ., MA, D. Min., Theological University of America

## STAFF

**Jason Gann** – Registrar, B.S., Tennessee Technological University, B.A. Tennessee Bible College, M.A., Tennessee Technological University, Ed. S., Tennessee Technological University

**Joy Wheeler** – Technical Coordinator, B.S., Freed-Hardeman College

**Allie Strong** – Instruction Assistant, B.S., Lincoln Memorial University

**Mallory Huddleston** – Public Relations Director, B.S., B.A., Tennessee Technological University

**Wanda Maxwell** – Librarian, B.S., Tennessee Technological University, M.S., East Tennessee State University





## GENERAL INFORMATION

### Authorization

Tennessee Bible College is authorized by the Tennessee Higher Education Commission. This authorization must be renewed each year and is based on an evaluation by minimum standards concerning the quality of education, ethical and business practices, health and safety, and fiscal responsibility. The transfer of credits earned at Tennessee Bible College to another institution depends totally on the receiving institution. Accreditation does not guarantee transferability.

The Bible College is also approved by the Department of Veterans Affairs. Eligible students may receive G.I. benefits while attending the College.

### College Calendar

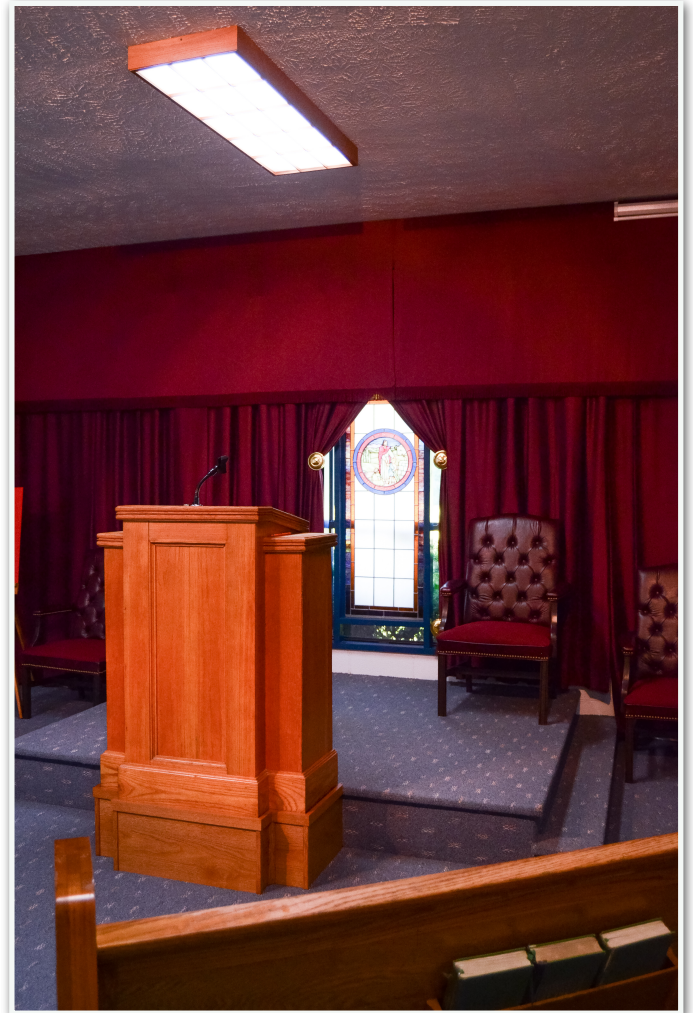
Fall Quarter will begin on Monday following Labor Day.

Winter Quarter will begin on Monday following New Year's Day.

Spring Quarter will begin the Monday of the week April begins.

Summer sessions will be announced during the Spring Quarter.

Holidays: New Year's Day, Memorial Day, Fourth of July, Labor Day, Thanksgiving Day, Christmas.



## Board of Trustees

Veachel Harlin, Tompkinsville, Kentucky

David Hill, Cookeville, Tennessee

Fred Jones, Greenbrier, Tennessee

Steve Carter, Tompkinsville, Kentucky



## Campus Facilities & Equipment

The campus at TBC has an 18,000 square feet facility composed of an administration wing and a student wing. The student wing features library facilities, chapel, kitchen, recreational room, recording room, restroom facilities, and sleeping quarters, shower units, and classrooms. Classrooms have wireless Internet access and a/v capabilities.

## STUDENT LIFE

### General Regulations

1. Conduct according to Christian principles is required of all students and must coincide with objectives of the College. If a student's behavior fails to reflect the purpose of the school, he will be brought in immediately for conference with College officials. If, after a reasonable length of time, there is no evidence of change, the student will be dismissed (unless earlier and stronger action is called for as set out in these regulations).



Any student who has been dismissed but has completely overcome or corrected the reasons for the dismissal, may make application to the President, and/or his Committee, in person. To be readmitted, the student must meet all the initial College entrance requirements again.

2. All who are associated with the College (students and faculty alike) are expected to conduct themselves in an honest and upright manner with everyone.

3. The moral standard is to be of the highest possible caliber. Specifically, the College will not tolerate: abuse of others, smoking, use or possession of alcoholic beverages and/or illegal use of drugs of any kind in any way, profanity, dancing, obscene literature and pictures, improper dress, stealing, cheating, plagiarism, fornication, adultery, or any other form of sexual relations outside of a marriage between a man and a woman, or any action which is clearly disrespectful of professors and/or administrative officials or any conduct unbecoming to a Christian.

4. Students accepted at Tennessee Bible College agree to abide by the regulations set forth within the current catalog.

5. Professors may be addressed as brother or mister.

### **Student Complaint Procedure**

Any student having a complaint with the College may contact any faculty member and request a hearing with the Committee for Student Complaints. This committee will set a definite date to meet with the student. The student will be informed in writing as to the time and date of hearing by the Chairman of this committee or one whom he may assign. The student will be expected to appear at the set date and time. If he cannot be present, he must in writing state such. If it is not possible for the set meeting to take place, a new date and time will be set and all involved parties informed. Grievances not settled at the institutional level may be referred to the staff of the Tennessee Higher Education Commission at (615)741-5293.



### **Chapel**

Chapel will be held regularly each school week. Chapel attendance is mandatory for students attending on-campus. All students (credit and audit)

whose classes adjoin chapel, both before chapel and after chapel, must attend the chapel session.

Chapel attendance records will be kept. Unexcused absences will be treated as an unexcused absence from class. Exemptions must be excused through the Dean's office. No grace days will be allowed.

### **Tennessee Bible College Associates**

The Tennessee Bible College Associates provide opportunities for fellowship and service to the College. Faculty, students, and their spouses are greatly encouraged to participate.

### **Housing and Jobs**

Cookeville is a progressive city. There are many industrial plants located in the area. Students may seek jobs in these plants along with other work opportunities. Housing for students can be obtained through rental houses, apartments, trailers and, possibly, in private homes. Assistance is available in these areas.

### **Field Education**

The student will be given an opportunity to be involved in actual teaching, preaching, and various other activities in truly carrying out the Great Commission. There are many congregations near Cookeville and within easy driving distance which will enable students to gain needed preaching experience.

### **LECTURESHIPS, SEMINARS & OTHER PROGRAMS**

To enrich the educational experience of students and to encourage members of the community and religious people, the college offers lectureships and seminars (advertised and open to the public) throughout the year. Lecture programs are listed below:





### **Spiritual Renewal Week**

This annual lectureship is held on campus on campus the last weekend in February each year.

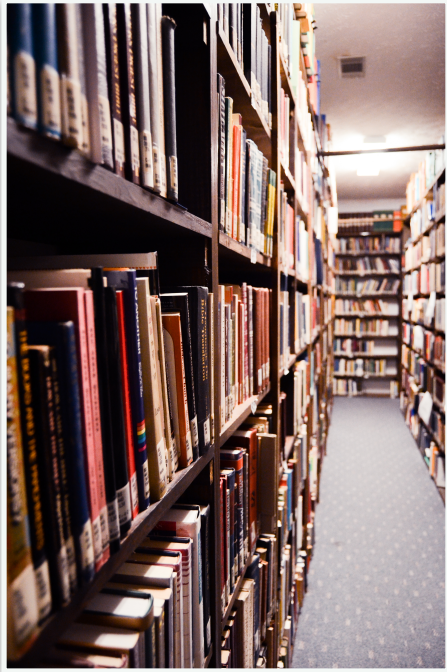
### **Contemporary Issues Conference**

By appointment anywhere. This program involves the faculty working with individuals and churches discussing openly problems facing the church and Bible solutions. This program has been conducted in many places around the country with positive results. Students may attend these programs at their own expense with transportation to and from the event sometimes provided.

### **Public Debates**

Throughout the year as opportunities arise, a faculty member may arrange a public discussion with a noted professor, preacher, teacher, religious leader, or politician. Most debates are held on campus and deal with a variety of issues (current, biblical, political, philosophical, or moral).

## LIBRARY FACILITIES



The library facilities play an important part in the program of any college. Recognizing this, Tennessee Bible College has an adequate library on campus and, additionally, has an arrangement with Vanderbilt University, the University of Tennessee, and Tennessee Technological University to use their library facilities. The campus library will continue to be expanded each year. Students at Tennessee Bible College also have access to numerous libraries and resource centers throughout the world by way of internet capabilities in the college library.



## **FINANCES**

### **Student Charges and Expenses**

The tuition is \$60 per quarter hour for graduate students.

### **Payment of Accounts**

The student will be allowed to pay his tuition and fees in prearranged payments during each quarter.

### **Scholarships**

A student may apply for a scholarship by sending the appropriate form to the Chairman of the Scholarship Committee. The student will be advised as soon as possible concerning the committee's decision. To qualify for a scholarship, a student must not only have a deep spiritual dedication, but also excellent grades in his schoolwork.

### **Loans**

The College has loans available for those who qualify on the basis of moral character, spiritual dedication and financial need.

### **Refunds**

If circumstances arise that make it necessary for students to withdraw from the college, a refund will be made of tuition according to the following schedule:

After 1 week.....	90%
After 2 weeks.....	80%
After 3 weeks.....	70%
After 4 weeks.....	60%
After 5 weeks.....	None
All other fees are non-refundable	

**\*Program Costs:**

<b>Program</b>	<b>Length</b>	<b>Location</b>	<b>Credit Hours</b>	<b>Total Tuition Cost</b>
Master of Theology	24 Months	On Campus	48	\$2,880.00
Doctor of Theology	36 Months	On Campus	87	\$5,220.00

\*These tuition costs are guaranteed not to increase within one year from enrollment. Online costs of programs are the same as on-campus.

**ACADEMIC REGULATIONS****Academic Year**

The regular academic year is divided into three eleven-week quarters: Fall, Winter, and Spring. Summer quarter sessions will also be scheduled.

**Grading System**

<b>Grade</b>	<b>Significance</b>	<b>Quality Points per Hour</b>
<b>92-100</b>	<b>A Excellent</b>	<b>4</b>
<b>83-91</b>	<b>B Good</b>	<b>3</b>
<b>72-82</b>	<b>C Average</b>	<b>2</b>
<b>65-71</b>	<b>D Low Passing</b>	<b>1</b>
<b>Below 65</b>	<b>F Failing</b>	<b>0</b>
	<b>WP Withdrew Passing</b>	<b>0</b>
	<b>WF Withdrew Failing</b>	<b>0</b>
	<b>I Incomplete</b>	<b>0</b>
	<b>Audit</b>	<b>0</b>



An "I" will be given only when necessary and should not be regarded as a convenience for the student. It will be calculated as a failing grade unless it is removed by the end of the next quarter.

### **Unit of Credit**

The unit of credit is the quarter hour. One quarter hour of credit represents one 50-minute period per week of lecture or classroom situation during an eleven-week quarter.

### **Student Load**

The normal graduate load is 9 quarter hours and not more than 12 quarter hours.

### **Academic Honors**

Each quarter two honor rolls will be posted. These will be known as the "Dean's List" and the "President's List." To receive either one of these honors, a student must be full-time and have a grade point of 3.00 for the Dean's List and a 3.5 for the President's List.

### **Class Attendance**

Students are required to attend all class sessions. Any absence must be explained to the teacher when the student returns to class. The teacher will lower the student's grade by one letter for each unexcused absence. If a student is tardy three times (without proper excuse) he will be charged with one unexcused absence.

### **Contact Hours for Online Students**

A total of 18 clock hours of on-campus class experience is required for the master's degree. A total of 24 clock hours of on-campus class experience is required for the doctoral degree.

## **Excused Absences**

The following will constitute an excused absence:

- a) Officially approved school or church activities
- b) Illness
- c) Death in the immediate family

NOTE: Students are responsible for all work and class activities whether absences are excused or unexcused.

## **Transcripts**

Official copies of a student's record will be furnished at the written request of the student. The first copy will be free. Additional copies may be obtained at \$2.00 each.

## **Placement**

Tennessee Bible College provides no guaranteed placement service. However, the College does help connect churches with preachers looking for employment.

## **Probation and Suspension**

The highest possible standard of scholarship levels is urged upon all students. If a student is either unable or unwilling to maintain a satisfactory level of academic work, the college will take appropriate steps. Any student falling below the minimum level for his grade point per quarter will be placed on academic probation unless his cumulative level is 2.00 or higher. If a student falls below his established level for two successive quarters, academic



probation will be automatic regardless of his cumulative grade point average. To remove academic probation, an achievement of the student's minimum scholarship level requirement must be met the following quarter on a minimum of 12 hours of work.

A student is subject to suspension if he fails half or more of the hours for which he is enrolled in any given quarter. A student may also receive suspension if he fails to remove academic probation within the appropriate time period and has failed to accumulate the necessary overall grade point average. All suspended students must make application to the Academic Affairs Committee for readmission. The second suspension will be permanent.

### **Class Changes**

A student may make certain changes in his class schedule (dropping or adding courses) subject to approval by the Dean. Class changes will be permitted until the third class meeting.



## **DEGREES OFFERED**

Tennessee Bible College offers two graduate degrees: Master of Theology and Doctor of Theology. Both degrees are in Christian Doctrine and Apologetics.

Both the M.Th. and the Th.D. programs are research-oriented with a practical thrust. They are designed to prepare students to defend and teach Bible truth effectively.

## **DEGREE REQUIREMENTS**

### **Master of Theology**

To graduate with the Master of Theology degree, a student must:

1. Hold an acceptable baccalaureate degree.

2. Take leveling classes if needed. If your undergraduate degree is in a field other than Bible and Theology, you will be required to take the following courses if you have not taken them:

A300 Modern Philosophy	T121 Pentateuch
A309 Inspiration of the Bible	T321 Literature of the Prophets I
A451 Existence of God	T112 Life of Christ I
D109 Hermeneutics	T113 Life of Christ II
D411 Denominational Doctrines	T131 Acts
D412 World Religions	T132 Eph., Phil., Col., & Philemon
H201 Reformation History	
H202 Restoration History	
L151 New Testament Greek I	
L152 New Testament Greek II	
L153 New Testament Greek III	
M110 Introduction to Christian Counseling	

This list of prerequisites is a general guide. The M.Th. is a specialized and unique degree that builds on knowledge acquired on the undergraduate level. That is why we will work with you individually. We will weigh each student's background, knowledge, and goals to make the best use of foundational undergraduate courses without unnecessarily delaying entrance into the graduate program.

3. Complete a minimum of three quarters of study in the Graduate School. Up to six quarter hours may be transferred from another institution toward the Master's degree, if approved by the Graduate Committee.
4. Complete 48 quarter hours, as follows: The eight core curriculum courses (24 hours); four elective courses (12 hours); thesis or non-thesis option (12 hours).
5. Maintain a "B" average.
6. Write the Master's thesis according to the guidelines given below or complete an approved non-thesis option.
7. Complete requirements for the degree within seven years after entering the Master of Theology program at Tennessee Bible College.

### *Non-Thesis Option for Master of Theology*

Graduate students in the M.Th. program may choose approved projects in lieu of a master's thesis. These projects may be one of the following:

1. A student may take 12 hours of Hebrew (L261, L262, L263).
2. A student may complete two supervised projects worth six credit hours each. These projects must be approved by the graduate committee and pursued under a guiding professor. See *How to Pursue A Non-Thesis Option* for details and ideas.
3. A student may take a combination of approved coursework totaling six hours (524 and 508 or L251 and L252) and one supervised project worth six hours.

### *How to Pursue a Non-Thesis Option*

1. Do not begin writing a project until you have written approval from the graduate committee.
2. Submit your proposal in writing to the graduate committee as soon as possible after entering the Master's program. Remember that there are three ways of doing the non-thesis option, so indicate the approach.
3. If your project ideas need to be changed or revised, the graduate committee will inform you. If your proposal is approved, you will be assigned a guiding professor.
4. When you receive written approval of your proposal, your guiding professor will begin working with you.
5. What are some ideas for non-thesis projects? If you choose to take the approved classes for the non-thesis option (L261, L262, L263), the requirement is simply to complete those courses. If you choose to do two projects or one project and two approved classes (524 and 508 or L361 and L362), here are some project possibilities: a. special research in biblical areas. a case regarding an issue in apologetics. a historical work about a belief, church, or movement. a practical study of works, problems, and issues in church work, missions, family life or culture in general.

## **Doctor of Theology**

1. If you are applying to the Th.D. program you must have a Master's degree in Bible or Theology. You may also need to take the prerequisite courses for the M.Th. degree plus other courses. As with leveling courses for the Master's program, we will consider each case to determine any exceptions or additions. The Th.D. program is a specialized degree in Christian Doctrine and Apologetics and covers a wide range of topics. A good foundation and some advanced knowledge in these areas is essential.
2. Complete 87 quarter hours of study above the Master of Theology level, as follows: the twelve courses in the core curriculum (36 hours); five elective courses (15 hours); the dissertation (36 hours). Application to transfer graduate credit from other institutions may be made to the Graduate Committee.
3. Demonstrate knowledge of Old Testament Hebrew and New Testament Greek. This requirement may be satisfied by completing a three quarter sequence of undergraduate level courses in Hebrew and Greek and completing graduate courses 525 and 531 with a grade of "B" or above on both courses.
4. Pass a preliminary examination. This examination, which may be written, oral, or both, at the discretion of the Graduate Committee, has the purpose of testing the student in regard to his grasp of the broad field of Christian Doctrine and Apologetics. The examination helps to assess the student's ability to teach and defend Christian doctrine. The examination also helps the Graduate Committee to decide as to the fitness of the student to undertake writing a dissertation of this field.
5. Be admitted to candidacy for the Th.D. Candidacy status is extended after satisfactory completion of all course work, all language requirements, and after passing the preliminary examination.
6. Write the doctoral dissertation according to the guidelines given below.
7. All requirements for the Th.D. degree must be completed within seven years of the date of entry into the doctoral program. Application may be made to the Graduate Committee for an extension of time.

## Guidelines for Theses and Dissertations

**Registration:** The student must register for thesis credit hours. Ideally, these hours should be spread out evenly during the quarters in which thesis work is done.

**Proposal:** The topic investigated should be one that is of interest to the student. The student should select the thesis subject and submit it to the Graduate Committee no later than October 1st before the expected year of graduation. The proposal should contain a precise thesis statement and an outline showing how the student plans to develop the study and how the study will be narrowed or limited so as to be manageable. The proposal must be approved by the Committee no later than November 1st before the expected year of graduation.

**Procedure:** Upon approval of thesis proposal, the student will be assigned a Committee member who will serve as a guiding professor. The thesis will be presented to the Committee for approval on a section-by-section basis. The guiding professor will determine the deadline for each section. However, at least one-half of the proposal must be approved and completed by February 1st of the year in which the student expects to graduate. The guiding professor will inform the student of any recommended Committee revisions, and these corrections must be satisfied before the date set by the guiding professor. Work must be done promptly and sufficiently. Attitude means much. The thesis must be presented in full to the Committee by April 15th of the year in which the student expects to graduate. Four photocopies of the thesis must be given to the Committee at this time. The student will be informed as to the time of the oral examination. Upon passing this examination, the student will be informed as to any final revisions or corrections. The student must present five bound copies of the thesis to the Committee before graduation.

**Form:** Theses must conform to the format set out in the *Chicago Manual of Style*. Type print (font) should be no smaller or larger than 12 point. The thesis must be free of errors of any kind: misspelled words, faulty punctuation, grammatical errors, etc. Theses not meeting these guidelines will be returned to the student. Note: capitalize personal pronouns referring to Deity. In general, if in doubt, capitalize.

The thesis or dissertation must be free of plagiarism. Every time an idea or thought is gleaned from a specific source, that source should have a footnote reference and a footnote to credit the source – whether or not the actual words of another are quoted. The principle of giving credit to the source applies not only to material from books, and periodicals, but also to ideas taken from sermons, lectures, audio and video tapes – whatever the source. If even so much as a phrase of another author or speaker is used, appropriating his/her exact words, these words should be enclosed in quotation marks, and a footnote should direct the reader to the source being credited. *If the student is ever in doubt as to whether to credit a source, he/she should credit the source.*

**Contents:** The thesis should have the following characteristics:

1. **Problem Solving:** Theses should display an unremitting focus toward a well-defined objective.
2. **Originality:** Though in principle most issues have been raised and debated in the past, theses should show some degree of originality. The topic chosen should ideally have some distinctive feature as to the approach used. It should not be just a duplication of what others have done. It is especially good to write in an area where there is a real need, not on a subject that has been overdone by many others.
3. **Comprehensiveness:** All relevant aspects of the thesis should be covered.
4. **Proof:** The writer must present evidence for assertions related to the focal issue of the thesis. He/she must state conclusions concisely and answer objections to his/her position.
5. **A Balance of the Theoretical and the Practical:** Ideally the thesis should contribute both to the world of ideas and the world of practice. It should be one that will have lasting, practical value for those who will read it in years to come, rather than being simply an exercise that complies with the requirement for receiving the degree. It should be a contribution to scholarship that will reflect credit on the student in future years, that will reflect favorably on Tennessee Bible College, and that will glorify Christ in His church.
6. **Precision of Expression.**
7. **A Clear Conclusion Written by the Author in His Own Words.**
8. **Careful and Thorough Research.**



**Doctoral Dissertations:** Guidelines for dissertations are the same as those for theses with the following exceptions:

1. Dissertation proposals must be submitted to the Graduate Committee no later than April 1<sup>st</sup> before the expected year of graduation.
2. Dissertation proposals must be approved by the committee no later than May 1<sup>st</sup> before the expected year of graduation. At least one-half of the dissertation must be completed by November 1<sup>st</sup> before the expected year of graduation. The dissertation must be presented in full to the Committee by April 15<sup>th</sup> of the year in which the student expects to graduate.

### **Core Curriculum for the Master of Theology Degree**

The following courses are required of each student for the Master of Theology degree:

- 502     *Existence and Biblical Doctrine of God*
- 503     *Advanced Inspiration of the Bible*
- 510     *Advanced Hermeneutics*
- 511     *History of Theology*
- 512     *Contemporary Issues*
- 522     *Biblical Doctrine of Last Things*
- 525     *Exegesis of the Greek New Testament*  
          (or: 531 *Readings in the Hebrew Old Testament*)
- 534     *Applied Biblical Counseling*

### **Core Curriculum for the Doctor of Theology Degree**

The following courses are required of each student for the Doctor of Theology degree:

- 603     *Critique of Calvinism*
- 602     *The Bible and the Canon*
- 606     *Creation and Evolution*
- 608     *Biblical Doctrine of Prophecy*
- 610     *The Problem of Evil*

- 613 *Gender: Scripture, Creation and Culture*
- 614 *Scripture and Catholicism*
- 623 *Islam in the Light of Scripture*
- 625 *Christianity and Marxism*
- 627 *Alleged Discrepancies of the Bible*
- 660 *Literature of the Restoration Movement*
- 704 *Polemics in Christian Doctrine and Apologetics*

### **COURSE DESCRIPTIONS**

**(Each course is three quarter hours except 599 and 799)**

- 500 *Introduction to Graduate Study.*
  
- 501 *The Book of Genesis* – Detailed exegesis of the book of Genesis. Special attention is given to the way this book prepares the reader for the rest of the Bible.
  
- 502 *Existence and Biblical Doctrine of God* – A detailed analysis of the arguments that demonstrate the existence of God.
  
- 503 *Advanced Inspiration of the Bible* – Reasons for accepting the Bible as the inspired Word of God are set forth with logical precision.
  
- 505, 506, 507 *Theological German* – Focuses on learning to read the Bible and other religious works in German, with minimum time devoted to listening, speaking, and writing skills. Open to those who have not previously studied German.
  
- 508 *Advanced Topical Bible Studies* – An in-depth study of some major issues that have arisen within the Lord's church in recent years.
  
- 510 *Advanced Hermeneutics* – An in-depth study of the application of the principles of interpretation to certain crucial problems.
  
- 511 *History of Theology* – A look at the systems of influential major theologians in the Medieval, the Reformation, and the Modern periods.

- 512 *Contemporary Issues* – Each age has certain religious issues to appear. These issues have to do with the direction in which the church goes to some degree. With the Bible as the guide, these certain issues and problems are studied. A balanced study of the Truth is given on these issues.
- 514 *The Book of John* – Exegesis of the Gospel according to John.
- 522 *Biblical Doctrine of Last Things* – Attention will be given to the Biblical view of Death, the Second Coming of Christ, the Resurrection, the Judgment, and Eternity.
- 523 *Jesus Christ as Controversialist* – A detailed study of the polemical work of Jesus Christ.
- 524 *Advanced Greek Grammar* – An in-depth study of the grammar of the Greek New Testament. Attention is given to specific New Testament passages which exemplify the various grammatical points.
- 525 *Exegesis of the Greek New Testament* – Detailed exegesis of selected passages in the Greek New Testament.
- 531 *Advanced Readings in the Hebrew Old Testament* – Intensive study of selected passages in the Hebrew Old Testament.
- 534 *Applied Biblical Counseling* – Biblical methods of dealing with problems will be identified.
- 540 *Biblical Doctrine of Free Will* – An examination of the meaning and nature of free will and a defense of this doctrine against the prominent philosophical, scientific, and theological theories.
- 598 Non-Thesis Master's Option – Credit: 12 hours.
- 599 *Master's Research and Thesis* – Credit: 12 hours.

- 600     *Critique of Atheism and Agnosticism* – A critical examination of the arguments advanced by atheists and agnostics.
- 601     *Congregational Management* – This course deals with practical issues that often hinder churches: Wayward members, church attendance, moral problems, doctrinal disputes, personal conflict, church discipline, family counseling, leadership training, church finances, and other matters in congregations.
- 602     *The Canon of Scripture* – A biblical and historical study of how and why the books of the Old Testament and the New Testament are recognized as Scripture while other ancient writings are not.
- 603     *Critique of Calvinism* – A critical examination of the theology of one of the most influential leaders of the Reformation Movement. The primary text for this course is *Institutes of the Christian Religion* by John Calvin.
- 604     *Advanced Textual Studies of the Old Testament* – Verse-by-verse study of selected chapters from various books of the Old Testament.
- 605     *Advanced Textual Studies of the New Testament* – Careful study of selected New Testament passages.
- 606     *Creation and Evolution* – This class on the origin of the universe looks at the fallacies of evolutionary theory in light of scientific as well as biblical evidence. *Pre-Requisite* A451 Existence of God.
- 607     *The All-Sufficiency of the Bible* – An in-depth study of the qualities of the Bible that show its completeness and prove its inspiration.
- 608     *Biblical Doctrine of Prophecy* – An extensive study of the nature and interpretation of predictive prophecy. This course looks at the apologetic value of prophecy and defends its role against denials and abuses of this amazing proof of the inspiration of the Bible.

- 610     *The Problem of Evil* – One of the oldest and most perplexing questions of life is “If God is all-loving and all-powerful, why does evil exist?” This course delves into the practical, philosophical, and biblical dimensions of this monumental issue. *Pre-Requisite* A452 Attributes of God.
- 613     *Gender: Scripture, Creation and Culture*– A biblical look at the nature and God-given roles of males and females. This course reflects on the lessons of history, responds to contemporary thought, and applies facts and principles of Scripture to pertinent questions about the home, the church, and society as a whole.
- 614     *Scripture and Catholicism*– A critique of the Catholic claim of religious authority in light of two fundamental questions: How can we know that God has spoken (the question of revelation) and how can we know what God’s Word means (the question of interpretation).
- 616     *The Apologetic Value of Bible Miracles* – A study of how the Bible uses miracles as proof of the truth of the Christian faith.
- 623     *Islam in the Light of Scripture*– The Koran speaks of “people of the Book.” What is the Islamic view of divine revelation and authority in religion, government, and the home? This course compares Islamic apologetics with Christian evidences and shows the importance understanding Muslim beliefs.
- 624     *Christian Faith and the Philosophy of Science* – An analysis of the assumptions, limitations, and methods of natural science with a view to the relationship between such matters and Christian apologetics.
- 625     *Christianity and Marxism* – A critique of the moral and metaphysical tenets of Marxist ideology in light of history and Scripture. More than a course in political theory, this study goes to the philosophical core of one of the world’s most widespread and anti-Christian systems of thought.

- 627 *Alleged Bible Contradictions* – Fundamentally a course in Bible interpretation, this study examines the meaning of contradiction, types of alleged discrepancies, and approaches to resolving biblical difficulties. In keeping with a strict biblical view of the divine inspiration of scripture, this class emphasizes the remarkable unity of the Bible by exploring such matters as the “undesigned coincidences” of the scriptures and the nature of God as it pertains to this subject.
- 637 *Christian Journalism* – A study of effective writing for publication from religious news writing to formal research writing.
- 640 *God in Literature* – Various ideas about God expressed in American, English, and World literature.
- 650 *Special Problems in the Mission Field* – An extensive course in practical and doctrinal problems encountered in missions.
- 660 *Literature of the Restoration Movement* – This course provides an opportunity for extensive reading in some of the best works of the movement to restore New Testament Christianity.
- 700 *Special Problems* – A course in which the student writes research papers on three topics.
- 702 *Seminar in Apologetics* – One specific problem in apologetics will be critically analyzed in depth by each student.
- 704 *Polemics in Christian Doctrine and Apologetics* – Each student prepares a debate notebook on a particular topic in order to engage in a debate on that topic.
- 799 *Doctoral Research and Dissertation* – Credit: 36 hours.



TENNESSEE BIBLE COLLEGE  
PRE-ENROLLMENT CHECKLIST

Registration Date\_\_\_\_\_

Student Name\_\_\_\_\_

Social Security Number\_\_\_\_\_

Address\_\_\_\_\_

City\_\_\_\_\_ State \_\_\_\_\_ Zip\_\_\_\_\_

Telephone Number\_\_\_\_\_

Beginning Date of Program\_\_\_\_\_ Full-time or Part-time\_\_\_\_\_

Program Length\_\_\_\_\_ Projected Date of Graduation\_\_\_\_\_

Program Title\_\_\_\_\_ Total Cost of Program\_\_\_\_\_

Check each section when completed:

\_\_\_\_\_ Toured the institution

\_\_\_\_\_ Received an institutional catalog

\_\_\_\_\_ Given the time and opportunity to review the institutional policies in the catalog

\_\_\_\_\_ Knows the length of the program for full-time and part-time students in the  
academic terms and actual calendar time

\_\_\_\_\_ Informed of the total tuition and fee cost of the program

\_\_\_\_\_ Informed of the estimated cost of books and any required equipment purchases

\_\_\_\_\_ Given a copy of the institutional cancellation and refund policy

\_\_\_\_\_ Understands what “transferability of credit” means and the specific limitations,  
if any, should the institution have articulation agreements

\_\_\_\_\_ I realize that any grievances not resolved on the institutional level may be forwarded to the Tennessee Higher Education Commission, Nashville, TN 37243-0830, 615.741.5293.

\_\_\_\_\_ (a) For the program entitled \_\_\_\_\_, I have been informed that the current withdrawal rate is \_\_\_\_\_%, or in the past 12 months students enrolled in this program and \_\_\_\_\_ completed this program.

\_\_\_\_\_ (b) For the program entitled \_\_\_\_\_, I have been informed that for the students who graduated, the job placement rate is \_\_\_\_\_%, or in the past 12 months, \_\_\_\_\_ were placed in their field of study out of students who graduated from this program.

\_\_\_\_\_ Has received and signed the Transferability of Credit Disclosure form

Signature of Director: \_\_\_\_\_  
Date

Signature of Student \_\_\_\_\_  
Date



**TENNESSEE BIBLE COLLEGE**  
**1616 McCulley Rd., Cookeville, TN 38506**  
**Enrollment Agreement**

Name \_\_\_\_\_

Last	First	Middle
------	-------	--------

Address

(Phone)

(If you live at another address when school is not in session, please list that address and telephone number below.)

Social Security Number

Hometown Newspaper

Program Title
---------------

Projected Graduation Date

Load: Part-time: \_\_\_\_\_ Full-time \_\_\_\_\_

Cost

\*Cancellation: Courses may be dropped or added up to the third class session.

Check each section when completed:

Toured the institution

Received an institutional catalog

Given the time and opportunity to review the institutional policies in the catalog

Know the length of the program for full-time and part-time students in the academic terms and actual calendar time

Date of enrollment: \_\_\_\_\_  
(Completion date: 4 years for B.R.E., 2 years for M.Th., 2 years for Preaching Diploma)

Informed of the total tuition and fee cost of the program \_\_\_\_\_

Informed of the estimated cost of books and any required equipment purchases \_\_\_\_\_

Given a copy of the institutional cancellation and refund policy \_\_\_\_\_

Understand what “transferability of credit” means and specific limitations, if any, should the institution have articulation agreements

\_\_\_\_\_ I realize that any grievances not resolved on the institutional level may be forwarded to the Tennessee Higher Education Commission, Nashville, TN 37243-0830, (615)741.5293.

\_\_\_\_\_ (a) For the program entitled \_\_\_\_\_, I have been informed that the current withdrawal rate is \_\_\_\_\_%, or in the past 12 months students enrolled in this program and \_\_\_\_\_ completed this program.

\_\_\_\_\_ (b) For the program entitled \_\_\_\_\_, I have been informed that for the students who graduated, the job placement rate is \_\_\_\_\_%, or in the past 12 months, \_\_\_\_\_ were placed in their field of study out of students who graduated from this program.

Received and signed the Transferability of Credit Disclosure form \_\_\_\_\_

Signature of Director \_\_\_\_\_  
Date \_\_\_\_\_

Signature of Student \_\_\_\_\_  
Date \_\_\_\_\_

### Refunds

If circumstances arise that make it necessary for students to withdraw from college, a refund of tuition will be made according to the following schedule:

After 1 week: 90%

After 2 weeks: 80%

After 3 weeks: 70%

After 4 weeks: 60%

After 5 weeks: None

All other fees are non-refundable.

Credits earned at Tennessee Bible College may not transfer to another educational institution. Credits earned at another educational institution may not be accepted by Tennessee Bible College. You should obtain confirmation that Tennessee Bible College will accept any credits you have earned at another educational institution before you execute an enrollment contract or agreement. You should also contact any educational institutions that you may want to transfer credits earned at Tennessee Bible College to determine if such institutions will accept credits earned at Tennessee Bible College prior to executing an enrollment contract or agreement. The ability to transfer credits from Tennessee Bible College may be very limited. Your credits may not transfer and you may have to repeat courses previously taken at Tennessee Bible College if you enroll in another educational institution. You should never assume that credits will transfer to or from any educational institution. It is highly recommended and you are advised to make certain that you know the transfer of credit policy of Tennessee Bible College and of any other educational institutions you may in the future want to transfer the credits earned at Tennessee Bible College before you execute contract or agreement.

Tennessee Code Annotated, Title 49, Chapter 7, Part 1

